




MAP LABEL	AIDS TO NAVIGATION	PLANE COORDINATES		LATITUDE	LONGITUDE
		X	Y		
G-31*	DBN-31 (05/20)	419,930	11238,542	27°44'00.83"	82°43'49.02"
G-33*	DBN-33 (05/20)	419,417	11238,293	27°44'18.12"	82°43'58.18"
R-34*	LT-34 (05/20)	419,154	11238,805	27°44'28.19"	82°43'57.81"
G-35*	DBN-35 (05/20)	418,804	11238,864	27°44'28.76"	82°44'01.70"

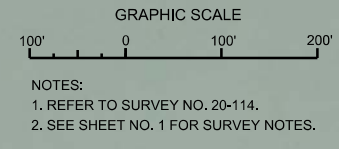

 US Army Corps of Engineers
 Jacksonville District
 SAFETY ON THIS JOB
 DEPENDS ON YOU

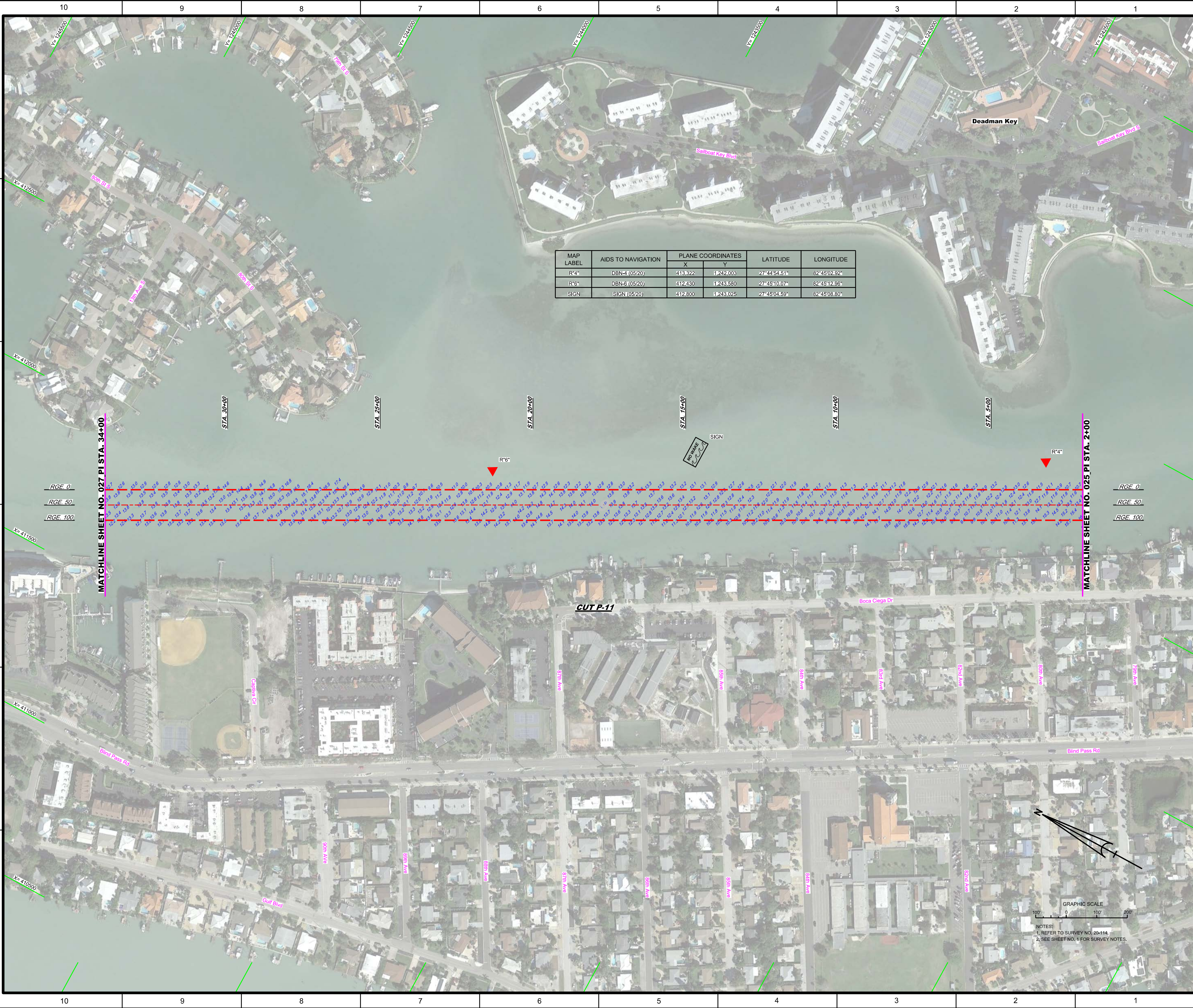
DEPARTMENT OF THE ARMY
 JACKSONVILLE DISTRICT, CORPS OF ENGINEERS
 JACKSONVILLE, FLORIDA

Checked by: GHR
 Designed by: WRM
 Drawn by: WRM
 File Name: STA. 43+00 CUT P-8 THRU STA. 3+00 CUT P-9
 Date: MAY 2020


GULF INTRACASTAL WATERWAY
 CALOOSAHATCHEE RIVER
 PINELLAS COUNTY, FLORIDA
HYDROGRAPHIC EXAM SURVEY FY20
9-FOOT PROJECT
 STA. 43+00 CUT P-8 THRU STA. 3+00 CUT P-9
PLAN

Scale: AS SHOWN
 Drawing no.
23
 SHEET 23 OF 78





MAP LABEL	AIDS TO NAVIGATION	PLANE COORDINATES		LATITUDE	LONGITUDE
		X	Y		
R'4	DBN-4 (05/20)	418.322	1242.003	27°44'54.51"	82°45'02.92"
R'6	DBN-6 (05/20)	412.430	1243.580	27°45'10.07"	82°45'12.86"
SIGN	SIGN (05/20)	412.800	1243.025	27°45'04.59"	82°45'08.80"



US Army Corps of Engineers
Jacksonville District
SAFETY ON THIS JOB DEPENDS ON YOU

DEPARTMENT OF THE ARMY
JACKSONVILLE DISTRICT, CORPS OF ENGINEERS
JACKSONVILLE, FLORIDA

Checked By: GHR
Designed By: WRM
Drawn By: WRM
File No.: 20-114-00-00-00-00
Date: MAY 2020

XXXXXXXXXXXXXXXXXXXX
XXXXXXXXXXXXXXXXXXXX
20-114-00-00-00-00
20-114-00-00-00-00
20-114-00-00-00-00
Reference Map: 20-114-00-00-00-00

GULF INTRACOASTAL WATERWAY TO THE RIVER
CALOOSAHATCHEE COUNTY, FLORIDA
HYDROGRAPHIC EXAM SURVEY FY20
9-FOOT PROJECT
STA. 2+00 THRU STA. 34+00 CUT P-11
PLAN

Scale: AS SHOWN
Drawing no.
26
SHEET 26 OF 78



US Army Corps of Engineers
Jacksonville District

SAFETY ON THIS JOB
DEPENDS ON YOU

MAP LABEL	AIDS TO NAVIGATION	PLANE COORDINATES		LATITUDE	LONGITUDE
		X	Y		
R*8	DBN-8 (05/20)	4111391	1245652	27°45'30.53"	82°45'24.67"
G*9	LT-9 (05/20)	4111033	1245727	27°45'31.25"	82°45'28.65"
R*10	DBN-10 (05/20)	4111268	1246407	27°45'37.99"	82°45'26.20"
G*11	LT-11 (05/20)	4111829	1247024	27°45'44.51"	82°45'26.45"
R*12	DBN-12 (05/20)	4111680	1247080	27°45'44.68"	82°45'21.54"



DEPARTMENT OF THE ARMY
JACKSONVILLE DISTRICT, CORPS OF ENGINEERS
JACKSONVILLE, FLORIDA

Checked By: GHR
Designed By: WRM
Drawn By: WRM
File Name: 20-114-68-SR-RIAL.DGN
Date: MAY 2020

GULF INTRACOASTAL WATERWAY TO THE RIVER
CALOOSAHATCHEE COUNTY, FLORIDA
HYDROGRAPHIC EXAM SURVEY FY20
9-FOOT PROJECT
STA. 34+00 CUT P-11 THRU STA. 9+00 CUT P-13
PLAN

Scale: AS SHOWN
Drawing no. **27**
SHEET 27 OF 78

NOTES:
1. REFER TO SURVEY NO. 20-114.
2. SEE SHEET NO. 1 FOR SURVEY NOTES.



US Army Corps of Engineers
Jacksonville District

SAFETY ON THIS JOB
DEPENDS ON YOU

DEPARTMENT OF THE ARMY
JACKSONVILLE DISTRICT, CORPS OF ENGINEERS
JACKSONVILLE, FLORIDA

GULF INTRACASTAL WATERWAY TO THE RIVER
CALOOSAHATCHEE RIVER
PINELLAS COUNTY, FLORIDA

HYDROGRAPHIC EXAM SURVEY FY20 9-FOOT PROJECT

STA. 9+00 CUT P-13 THRU STA. 24+00 CUT P-14

PLAN

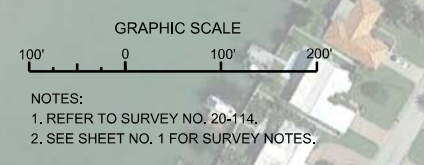
Scale: AS SHOWN
Drawing no.

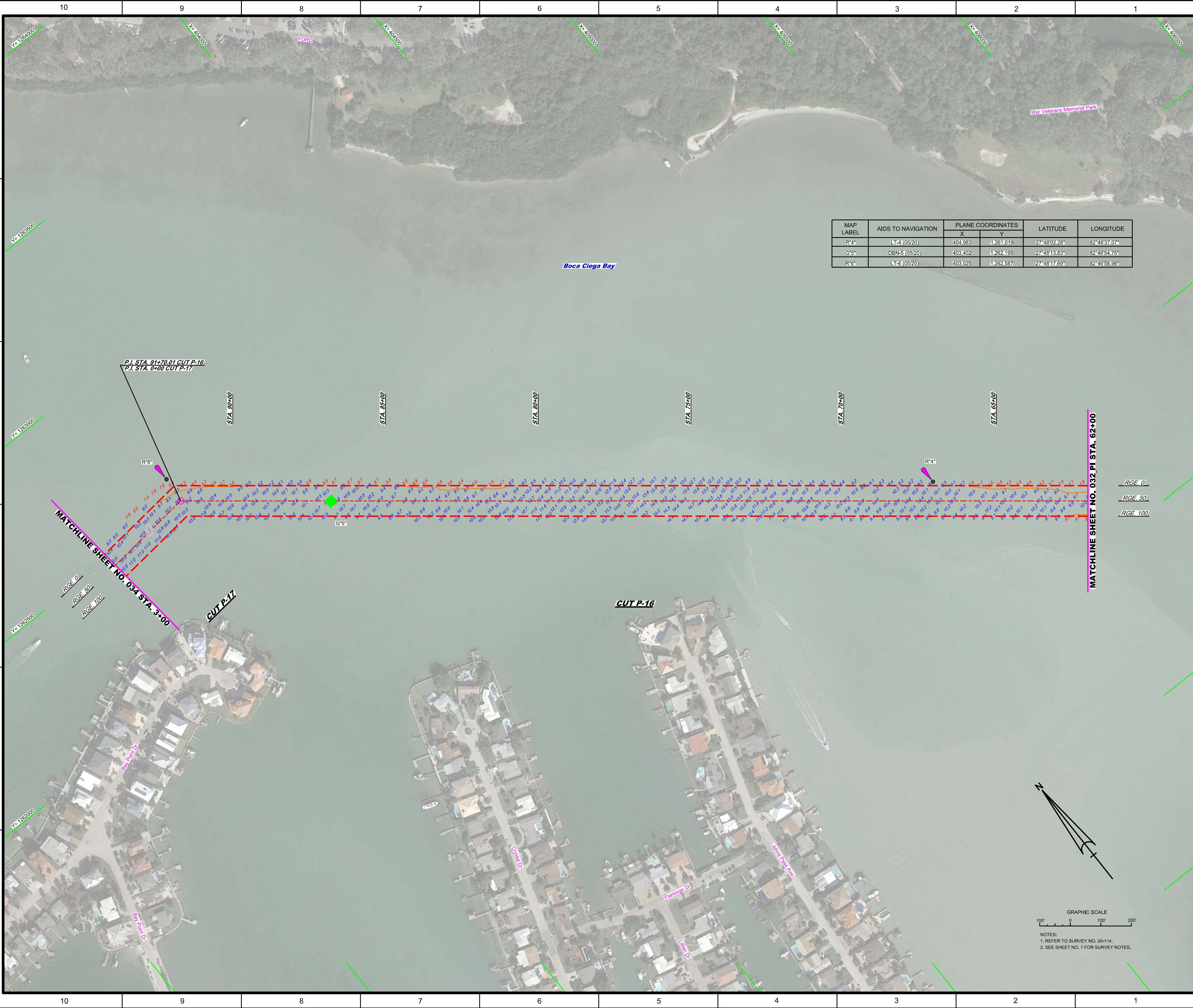
28

SHEET 28 OF 78




MAP LABEL	AIDS TO NAVIGATION	PLANE COORDINATES		LATITUDE	LONGITUDE
		X	Y		
G-13	DBN-13 (05/20)	412,191	1,248,149	27° 45' 55.30"	82° 45' 15.93"
R-14	LT-14 (05/20)	412,628	1,248,390	27° 45' 57.71"	82° 45' 11.08"
SIGN	SIGN (05/20)	412,729	1,248,373	27° 45' 57.55"	82° 45' 09.95"
SIGN	SIGN (05/20)	412,390	1,249,690	27° 46' 10.57"	82° 45' 13.82"
SIGN	SIGN (05/20)	412,369	1,249,613	27° 46' 19.71"	82° 45' 14.12"
SIGN	SIGN (05/20)	412,709	1,249,685	27° 46' 10.53"	82° 45' 10.27"
SIGN	SIGN (05/20)	412,693	1,250,613	27° 46' 19.72"	82° 45' 10.51"





MAP LABEL	AIDS TO NAVIGATION	PLANE COORDINATES		LATITUDE	LONGITUDE
		X	Y		
R*4	LT-4 (0520)	404,983	1,261,019	27°48'02.28"	82°46'37.07"
G*5	DBN-5 (0520)	403,402	1,262,195	27°48'13.63"	82°46'54.76"
R*6	LT-6 (0520)	403,025	1,262,587	27°48'17.69"	82°46'58.98"

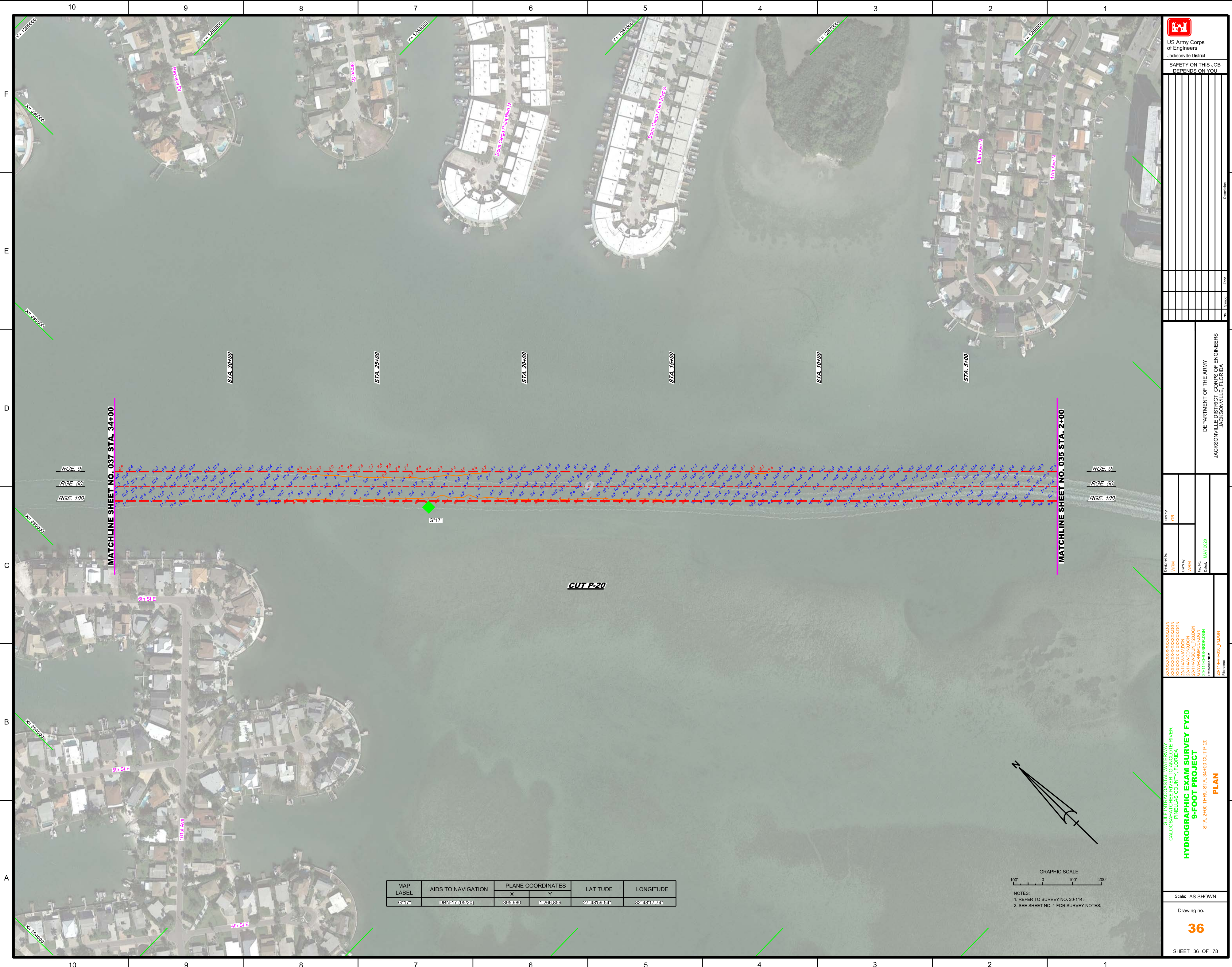

 US Army Corps of Engineers
 Jacksonville District
 SAFETY ON THIS JOB DEPENDS ON YOU

DEPARTMENT OF THE ARMY
 JACKSONVILLE DISTRICT, CORPS OF ENGINEERS
 JACKSONVILLE, FLORIDA

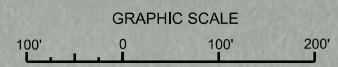
GULF INTRACOSTAL WATERWAY AT THE RIVER
 CALOOSAHATCHEE RIVER
 PINELLAS COUNTY, FLORIDA
HYDROGRAPHIC EXAM SURVEY FY20
9-FOOT PROJECT
 STA. 62+00 CUT P-16 THRU STA. 3+00 CUT P-17
PLAN

Scale: AS SHOWN
 Drawing no.
33
 SHEET 33 OF 78

GRAPHIC SCALE
 100' 0 100' 200'
 NOTES:
 1. REFER TO SURVEY NO. 20-114.
 2. SEE SHEET NO. 1 FOR SURVEY NOTES.



MAP LABEL	AIDS TO NAVIGATION	PLANE COORDINATES		LATITUDE	LONGITUDE
		X	Y		
G17	DBN=17 (05/20)	395,380	1,266,859	27°48'59.54"	82°48'17.74"



NOTES:
 1. REFER TO SURVEY NO. 20-114.
 2. SEE SHEET NO. 1 FOR SURVEY NOTES.

US Army Corps of Engineers
 Jacksonville District
 SAFETY ON THIS JOB DEPENDS ON YOU

DATE	DESCRIPTION	BY	CHKD

DEPARTMENT OF THE ARMY
 JACKSONVILLE DISTRICT, CORPS OF ENGINEERS
 JACKSONVILLE, FLORIDA


Checked by: GR
 Designed by: WRM
 Drawn by: WRM
 File No.: 20-114-CON-030
 Date: MAY 2020

XXXXXXXXXXXXXXXXXXXX.DGN
 XXXXXXXXXXXXXXXXXXXX.DGN
 20-114-AV-030.DGN
 20-114-CON-030.DGN
 20-114-G-030.DGN
 20-114-GR-030.DGN
 Reference files:
 20-114-HDR-030.DGN

GULF INTRACOSTAL WATERWAY
 CALOOSAHATCHEE RIVER
 PINELLAS COUNTY, FLORIDA
HYDROGRAPHIC EXAM SURVEY FY20
9-FOOT PROJECT
 STA. 2+00 THRU STA. 34+00 CUT P-20
PLAN

Scale: AS SHOWN
 Drawing no. **36**
 SHEET 36 OF 78

MAP LABEL	AIDS TO NAVIGATION	PLANE COORDINATES		LATITUDE	LONGITUDE
		X	Y		
G*21*	DBN*21 (05/20)	392.287	11270.632	27°49'36.65"	82°48'59.15"
R*22*	DBN*22 (05/20)	392.361	11270.798	27°49'38.30"	82°48'58.84"
G*23*	DBN*23 (05/20)	391.255	11271.749	27°49'47.64"	82°49'10.72"
R*24*	LT*24 (05/20)	391.093	11272.107	27°49'51.17"	82°49'12.55"
G*25*	DBN*25 (05/20)	390.770	11272.107	27°49'51.15"	82°49'16.15"

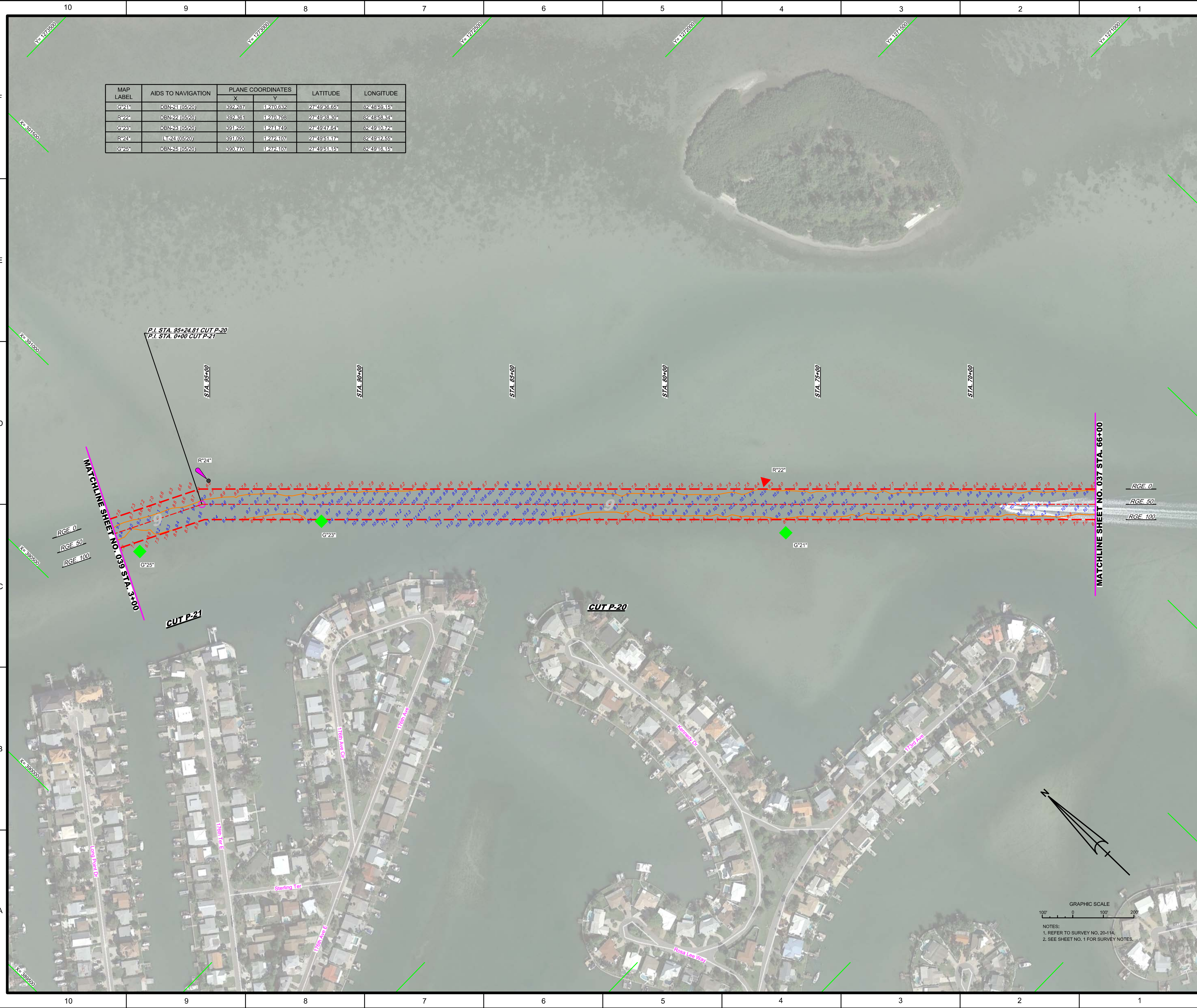

 US Army Corps of Engineers
 Jacksonville District
 SAFETY ON THIS JOB
 DEPENDS ON YOU

DEPARTMENT OF THE ARMY
 JACKSONVILLE DISTRICT, CORPS OF ENGINEERS
 JACKSONVILLE, FLORIDA

Designated By: GHR
 Drawn By: WRM
 Checked By: WRM
 Date: MAY 2020

GULF INTRACOSTAL WATERWAY
 CALOOSAHATCHEE RIVER
 PINELLAS COUNTY, FLORIDA
HYDROGRAPHIC EXAM SURVEY FY20
9-FOOT PROJECT
 STA. 66+00 CUT P-20 THRU STA. 3+00 CUT P-21
PLAN

Scale: AS SHOWN
 Drawing no.
38
 SHEET 38 OF 78



GRAPHIC SCALE
 100' 0 100' 200'
 NOTES:
 1. REFER TO SURVEY NO. 20-114.
 2. SEE SHEET NO. 1 FOR SURVEY NOTES.

